



DIRECT DRIVE 1000 PSI MISTING PUMP MANUAL

FOR MODELS

**60030K-DF-LP, 60031K-DF-LP, 60050K-DF-LP, 60051K-DF-LP,
60100K-DF-LP, 60101K-DF-LP, 60150K-DF-LP, 60151K-DF-LP,
60200K-DF-LP, 60201K-DF-LP, 60300K-DF**

DIRECT DRIVE MISTING PUMP SPECIFICATIONS



DIMENSIONS

20 1/2" L x 15" W x 13" H

WEIGHT

Up to 85 lbs.

FEATURES

- CAT PUMP
- TEFC MOTOR
- 3/8" INLET SOLENOID VALVE
- LIQUID FILLED PRESSURE GAUGE
- POWDER COAT FINISH
- LOW PRESSURE SWITCH
- 6 FT POWER CORD
- INTERNALLY FAN COOLED
- RUBBER FEET
- SCALE X FILTER & 5 MICRON
- DRAIN VALVE

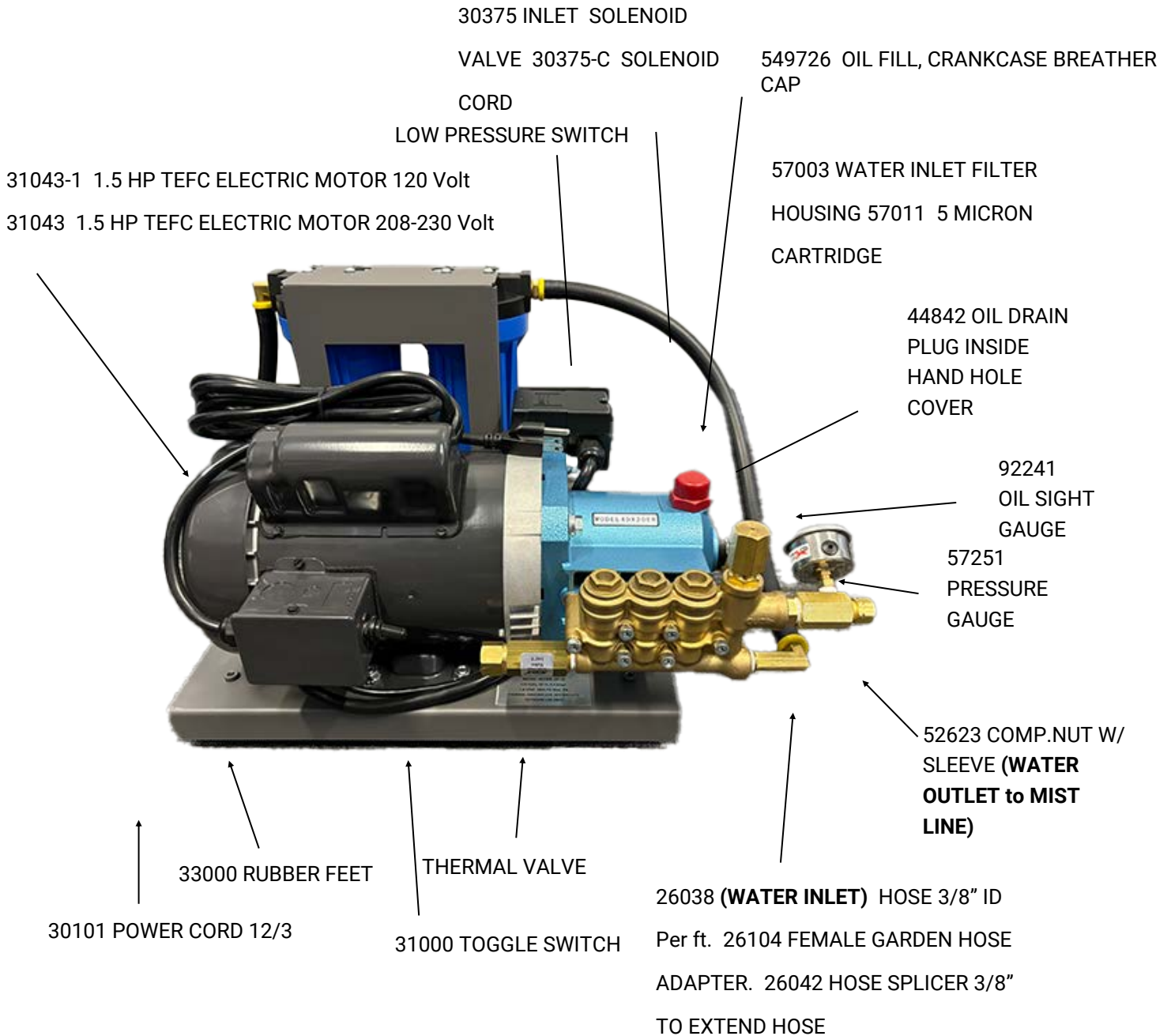
TECHNICAL SPECS

MAX DISCHARGE PRESSURE	1000 PSI
MOTOR OVERLOAD	AUTOMATIC
INLET PSI RANGE	30-60 PSI
MAX LIQUID TEMPERATURE	140° F
PRESSURE GAUGE	0-2000 PSI
SWITCH	TOGGLE
OIL CAPACITY	8.4 OZ

Model	Water Seal Kit	Oil Seals
60030K-DF-LP	33053	47215
60031K-DF-LP	33053	47215
60050K-DF-LP	33053	47215
60051K-DF-LP	33053	47215
60100K-DF-LP	33053	47215
60101K-DF-LP	33053	47215
60150K-DF-LP	33053	47215
60151K-DF-LP	33053	47215
60200K-DF-LP	76968	25301
60201K-DF-LP	76968	25301
60300K-DF	76295	25301

Model	Flow GPM	Volts Input	Motor (HP)	Pump RPM	Motor Amps	Nozzle Cap. (.008)	Nozzle Cap. (.012)	MSRP
60030K-DF-LP	.33	120	.75	1750	8.4	16	11	\$1,499
60031K-DF-LP	.33	208/230-1	.75	1750	4.2	16	11	\$1,499
60050K-DF-LP	.50	120	.75	1750	8.4	25	17	\$1,599
60051K-DF-LP	.50	208/230-1	.75	1750	4.2	25	17	\$1,599
60100K-DF-LP	1.0	120	.75	1750	8.4	50	36	\$1,699
60101K-DF-LP	1.0	208/230-1	.75	1750	4.2	50	36	\$1,699
60150K-DF-LP	1.5	120	1.5	1750	14.0	75	54	\$1,799
60151K-DF-LP	1.5	208/230-1	1.5	1750	7.0	75	54	\$1,799
60200K-DF-LP	2.1	120	1.5	1750	14.0	105	75	\$2,099
60201K-DF-LP	2.1	208/230-1	1.5	1750	7.0	105	75	\$2,099
60300K-DF	2.9	208/230-1	2	1750	9.4	145	104	\$2,399

PUMP OVERVIEW



GENERAL SAFETY PRECAUTIONS

⚠ WARNING CAN cause DEATH, SEVERE INJURY or substantial property damage.

⚠ CAUTION CAN cause MINOR INJURY or property damage.

GENERAL SAFETY PRECAUTIONS

Consequently, it is essential to comply with the instructions in this manual as well as local and national rules and safety regulations.

⚠ WARNING **HAZARDOUS VOLTAGE.** Can cause serious injury or death. Disconnect power before servicing pump. Pump must be connected to a properly grounded circuit. Do not operate pump in wet conditions.

⚠ WARNING **MOVING PARTS.** Pump may start automatically. Disconnect power, before servicing. Lockout/Tag out misting pump.

HOT SURFACES. Can cause serious injury. Do not touch. Allow to cool before servicing.

⚠ WARNING **HIGH PRESSURE WATER.** Bypassing, modifying or removing safety/relief regulator valves can cause serious injury or death. Do not bypass, modify or remove safety/relief valves. If a leak should occur shut unit off before attempting to tighten any fittings or tube repairs. Do not change any pressure settings above maximum rating. Maximum pressure is 1000 PSI / 70 Bar

⚠ CAUTION **RISK OF LEAKING or BURSTING.** Use only suitable tubing and fittings acceptable for pressure of not less than the maximum allowable working pressure of the pump. Remove water from lines and filter bowls during winter months to prevent freezing damage to pump or tubing.

⚠ CAUTION **Install pump in a suitable place to prevent property damage in the event a leak should occur.**

⚠ WARNING Electrical installation and service should be performed by a qualified electrician who is familiar with all applicable local, state and federal laws and regulations.

GENERAL. The motor rating, as shown on the motor nameplate, and the power supply must have compatible voltage, phase and hertz characteristics.

WIRE SIZE. The electrical wiring between the power supply and electric motor varies according to motor horsepower and other factors. Install adequately sized power leads to protect against excessive voltage drop during start-up. Refer to the National Electric Code (NEC) for information on selecting the proper wire size and securing electrical connections. If you connect additional electrical equipment to the same circuit, consider the total electrical load when selecting the proper wire size. **DO NOT UNDERSIZE WIRING. DO NOT USE EXTENSION CORDS.**

OPERATION

The Aeromist 1000 PSI Pump takes ordinary city water pressure, which is normally about 50-70 PSI, and “boosts” it up to 1000 PSI. The higher water pressure created by the pump enhances mist cooling and heat absorption in two ways. First, it produces a higher flow of water through the nozzle. More water being expelled from the nozzle means more cooling. Second, it creates a smaller finer mist droplet that allows the droplet to evaporate more quickly. Better evaporation means better cooling.

There are many applications for the 1000 PSI Pump. Applications include patio cooling for homes and restaurants, greenhouses, humidification, dust control, odor control and many more.

Caution, Warning and Safety Instructions:

1. **Warning:** Before plugging in the unit for the first time, read the following section carefully. To reduce the risk of electric shock, plug in supplied grounded cord into a properly grounded receptacle. When servicing this unit, unplug power cord before attempting any service or repair.
2. **Outdoor use ONLY!** Not for indoor use.
3. **Install pump in a suitable place to prevent property damage, in the event that a leak should occur.**
4. Turn water off, and disconnect power to the unit when not in use for extended periods of time.
5. Do not place pump in damp or wet environments.
6. Feed system with potable cold water supply only. Do not connect pump to hot water supply.

Do not expose pump to freezing temperatures. When winterizing disconnect pump from power and water supply, and store in a dry safe place. Make sure all water is drained from the system to prevent damage in the event of a freeze.

INSTALLATION

1. Install pump above grade level on a pre-formed concrete pad (16" x 16"). This pump is non-submersible. Locate pump in a location where flooding and roof runoff does not occur to avoid water damage to the electric motor.
2. Verify water feed to pump location is potable cold water supply only.
3. Connect cold water feed to pump inlet and connect nylon tubing to pump outlet. **Important: Install 50 ft. or more of nylon tubing from the pump to the metal line to prevent line noise and vibration.**
4. Remove black shipping cap on the pump crankcase and install the red breather cap provided. Unit is pre-filled with oil and ready to operate. Oil should be half full on the sight glass when unit is off. Do not overfill.
5. Plug pump into a properly grounded receptacle. Do not use extension cords!
6. On new misting systems, flush lines before installing nozzles. The pump will not build pressure until all of the nozzles are installed.
7. Do not exceed 1000 PSI and do NOT run the pump without water.

MAINTENANCE & PARTS

Change oil every 500 hours of operation or once a year. Use approved pump oil (57030) Proper oil level is half full on the sight gauge when the unit is off. Do not overfill. Oil capacity is 8.4 oz and Scale Ex. Change water filter cartridge annually or as needed. (57011/57011-X OR ES) 5 Micron Cartridge.

Winter shutdown:

Unplug pump power cord, shut off water supply, remove filter bowl and drain water. Drain water out of all lines using compressed air to prevent freeze damage.

57251 PRESSURE GAUGE 0-2000 PSI



31000 TOGGLE SWITCH 20 AMP



57030 CAT PUMP OIL 21 oz.



30375 SOLENOID VALVE 3/8"

30375-C CORD with DIN CONNECTOR



33053 SEAL KIT



66400K LOW WATER PRESSURE CUT-OUT SWITCH KIT



47215 OIL SEAL (3 required)



30215-CAT THERMAL PROTECTOR



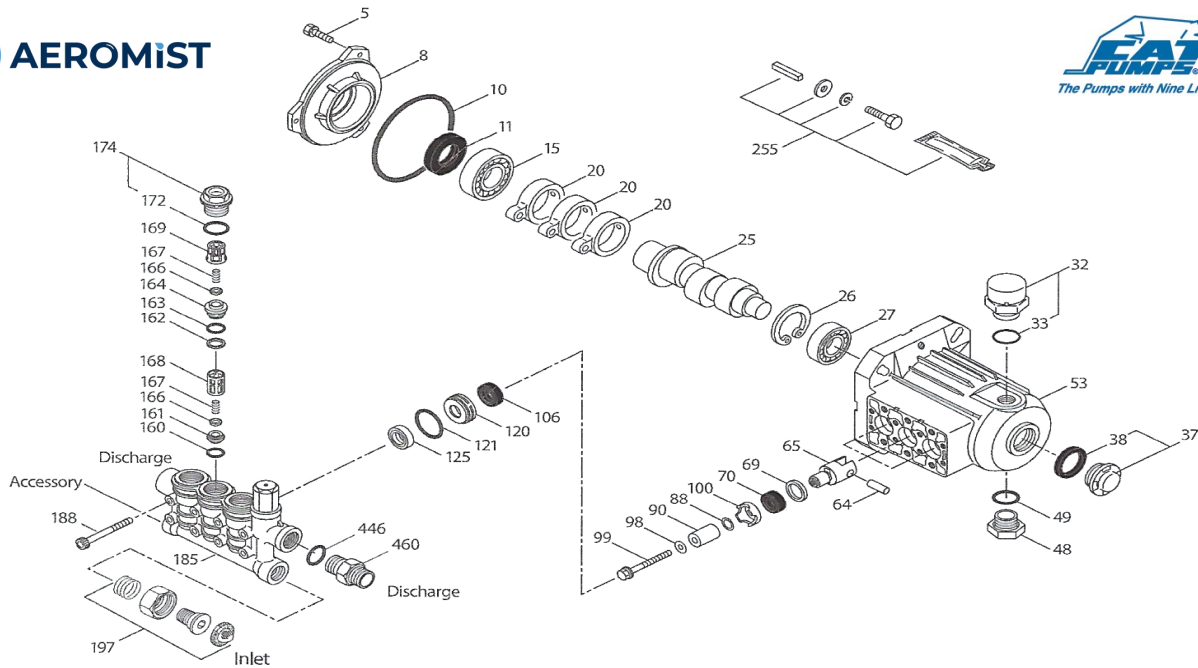
76976 VALVE KIT



54001 Drain Valve Kit



PUMP PARTS



Item	P/N	DESCRIPTION	QTY
5	549360	Screw, HHC Sems M6x14	3
8	547153	Cover, Bearing	1
10	14041	O-Ring, Bearing Cover—70D	1
11	55337	Seal, Oil	1
15	14488	Bearing, Ball, Inner	1
20	547020	Rod, Connecting Assy	3
25	132605 133987	Crankshaft, (Model 4SP21ELR) Crank-shaft (Model 4SP29ELR)	1
26	12385	Ring, Retaining	1
27	15710	Bearing, Ball , Outer	1
32	549726	Cap, Vented w/ O-Ring	1
33	14179	O-Ring, Oil Filler Cap—70D	1
37	92241	Gauge, Oil, Bubble w/ Gasket—80D	1
38	44428	Gasket, Flat, Oil Gauge—80D	1
48	44842	Plug, Drain	1
49	14179	O-Ring, Drain Plug—70D	1
53	547099	Crankcase	1
64	16948	Pin, Crosshead	3
65	49982	Rod, Plunger	3
69	126259	Washer, Oil Seal	3
70	25301	Seal, Oil—80D	3
88	132607	Washer	3
90	133988	Plunger (M18x24.6)	3
98	46730	Washer, Seal—90D	3

Item	P/N	DESCRIPTION	QTY
99	542405	Retainer, Plunger (M6x35)	3
100	133989	Screw, HHC Sems M6x14	3
106	43243	Seal, LPS w/ S-SPG	3
120	133990	Case, Seal	3
121	13978	O-Ring, Seal Case—70D	3
125	43245	Seal, HPS	3
160	17428	O-Ring, Inlet Seat—80D	3
161	547077	Seat, Inlet	3
162	48361	Back-Up-Ring, Discharge Seat	3
163	43358	O-Ring, Discharge Seat—70D	3
164	547076	Seat, Discharge	3
166	547098	Valve	6
167	46865	Spring	6
168	543988	Retainer, Spring, Inlet	3
169	49764	Retainer, Spring, Discharge	3
172	142807	O-Ring, Valve Plug—90D	3
174	547104	Plug, Valve (M20)	3
185	133991	Head, Manifold	1
188	549357	Screw, HSH (M6x60)	8
197	941516	Assembly, GH 3/8"	1
255	30516	Mount, Bolt Assy.	1
300	76295	Seal Kit	1
310	76976	Valve Kit	1
311	6107	Oil, Bottle	1

WARRANTY

Warranty and Statement

Aeromist warrants to its customers that Aeromist products, excluding nozzles, to be free of defects in materials and workmanship for a period of (3) years from the date of purchase to the original purchaser. With customers proof of receipt Aeromist will fix or replace the defective part or parts. Aeromist reserves the right to inspect the defective part or parts prior to replacement. Aeromist will not be responsible for consequential or incidental cost or damage caused by the product failure. Aeromist liability under this warranty is limited solely to the replacement or repair of defective parts.

Neither this warrant nor any implied warranty applies to damage or harm caused by any or all of the following:

1. Freight damage
2. Damage cause from freezing, fire, natural disaster, improper installation, chemicals, unusual characteristics of water supply.
3. Damage caused by parts, accessories, or components not obtained from or approved by Aeromist.
4. Damage due to misapplication and/or misuse.
5. Normal wear of moving parts or components affected by moving parts

The liability of Aeromist under the foregoing warranty is limited to the repair or replacement at the discretion of Aeromist. The return of the entire pump or other product to Aeromist factory must be within the warranty period, at the sole expense of the purchaser. Upon examination the returned product will be deemed to have been defective in material or workmanship.

Aeromist expressly warrants its pumps and other products as above stated. There are no other express warranties. Any implied warranties including implied warranty of merchantability or of fitness for a particular purpose are limited in duration to three years from the date of purchase by the original purchaser except in states that do not allow time limitations on implied warranties. There is no implied warranty of fitness for a particular purpose or merchantability when this product is put to an industrial, commercial or rental use.

No person including any dealer or representative of Aeromist is authorized to make any representation or war-ranty concerning Aeromist products on behalf of Aeromist or to assume for Aeromist the obligations contained in the warranty. Aeromist reserves the right to install the same upon its existing products or products then in process or manufacture. This warranty gives you specific legal rights, and you may also have other rights, which vary from state to state.

CCI-ARM, Inc. DBA Aeromist

21500 N. 8th Way #100

Phoenix, AZ 85024

833-367-6479

www.aeromist.com

REVISED AUGUST 2024

